

Date Created: 2024-02 Date Modified: 2024-04-04
Version ID: SH_SupplementLowProfileBracket_0020_EN

Shine LED Lamp Kit Guideline Supplement: Low Profile Bracket Installation

Product

Shine LED Lamp Kit

Introduction

This supplement provides instructions for installing the **Shine LED Low Profile Lamp Holder Kit** on Shine LED Kit brackets.

Equipment Required

- Conversion Brackets Assembly:
 - The 0480A011 UV69 Shine LED Kit, or
 - The 0480A013 UV54 Shine LED Kit.
 - The 0480A015 Low Profile Lamp Holder Kit.
- Standard Electrical Tool Screwdrivers.

Equipment Explanation

Some exposure frames may not have enough space to install the bulbs using the standard upgrade brackets on the equipment frame. The Low Profile Lamp Holder kit replaces the standard lamp sockets on the non-powered (no wires) brackets with a lower profile alternative mounting strip for holding the lamps.

Space savings is about 4 mm.

NOTE: the low profile kit displayed below is black for demonstration purposes only.



With standard Fitment

With Low Profile Lamp Holder Kit (strip)

Retrofit Steps

1. Obtain the Low Profile Lamp Holed Kit and open.



Inside there are three pieces (one for each bracket) and attaching screws.

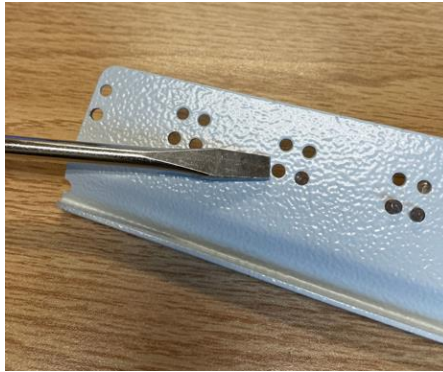


2. Ensure the protective film is removed from the plastic lamp holders.



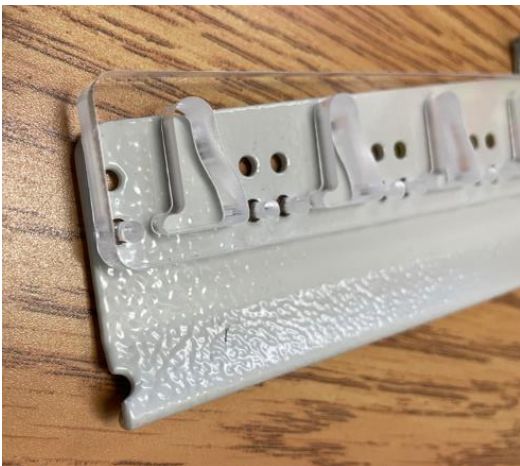
3. Remove the existing fitments from the non-powered bracket.

This step can be done by disengaging the tabs on the back of the bracket with a screwdriver.



4. Install the Low Profile Lamp Holder strip in place of the removed fitments by securing with the supplied screws from the opposite side of the bracket.

Ensure that you are installing in the same holes as the fitments were removed from.



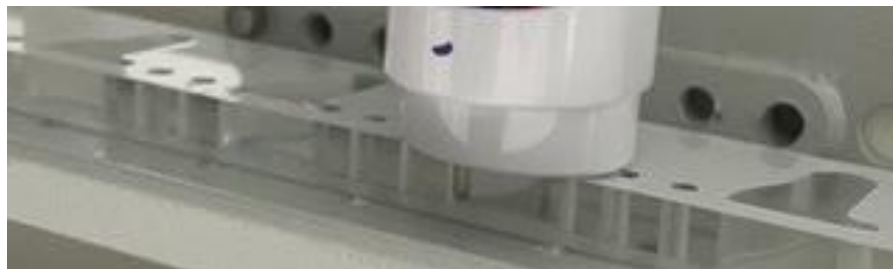
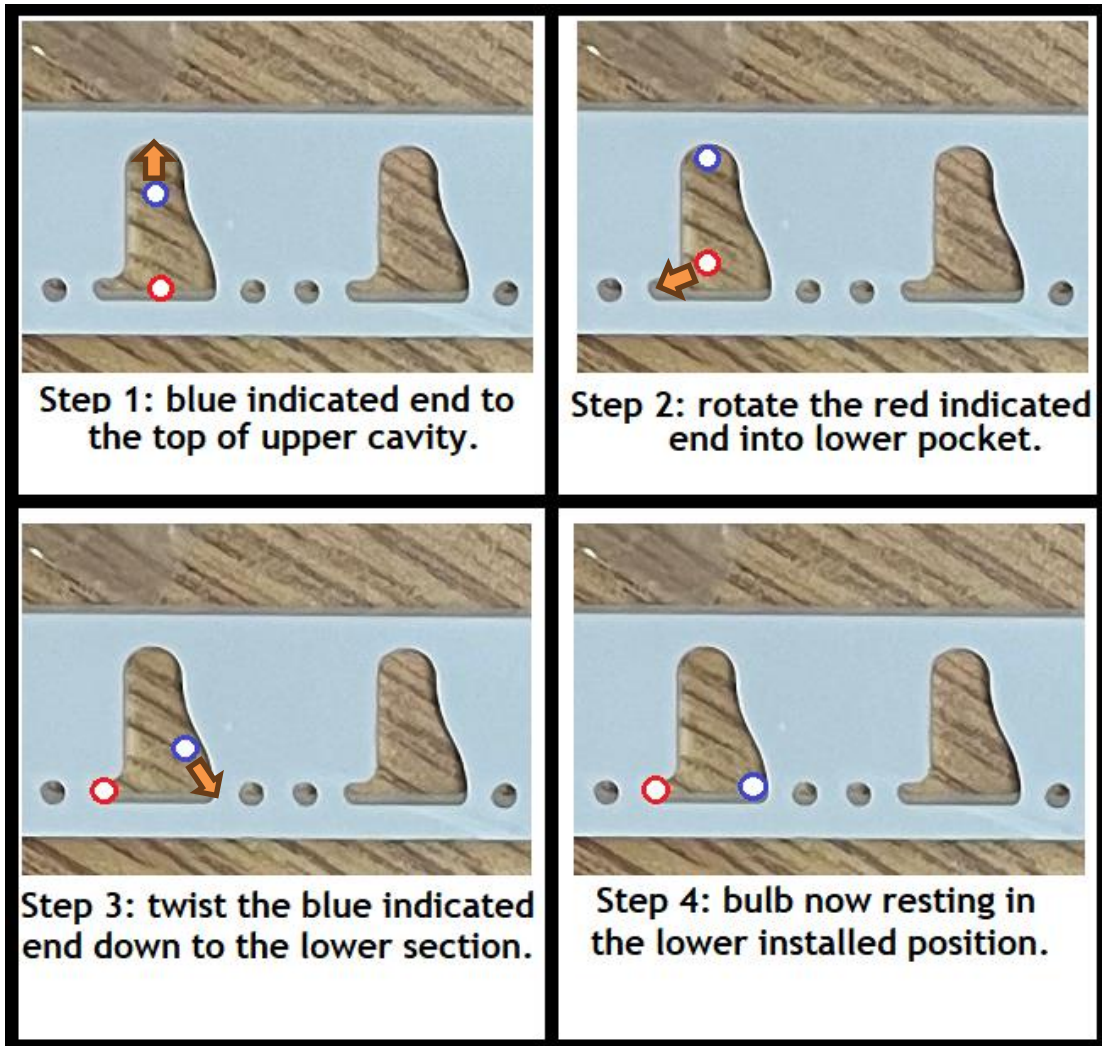
IMPORTANT NOTE: not every hole will need a screw. Locate the appropriate aligned ones.

5. Due to generic sizing, the Low Profile Lamp Holder piece may be too long for your bracket. You can cut the piece to length as required.



- The purpose of the oblong shaped cut-out is to enable you to rotate the lamp while twisting it into the fitment on the powered end.

When installing the lamp, install as shown and described:



Lamp in final position

NOTE: the above example still has the plastic film cover attached for illustration purposes.

See also	Basic Guideline for Installing the Shine LED Lamp Kit
Technical contact	Christopher Bradley
Date submitted	Feb 05 2024
Last updated	Apr 04 2024

©2024 Miraclon Corporation.
Technical data subject to change without notice.
FLEXCEL is a trademark of Miraclon. The Kodak trademark, logo and trade dress are used under license from Kodak.

